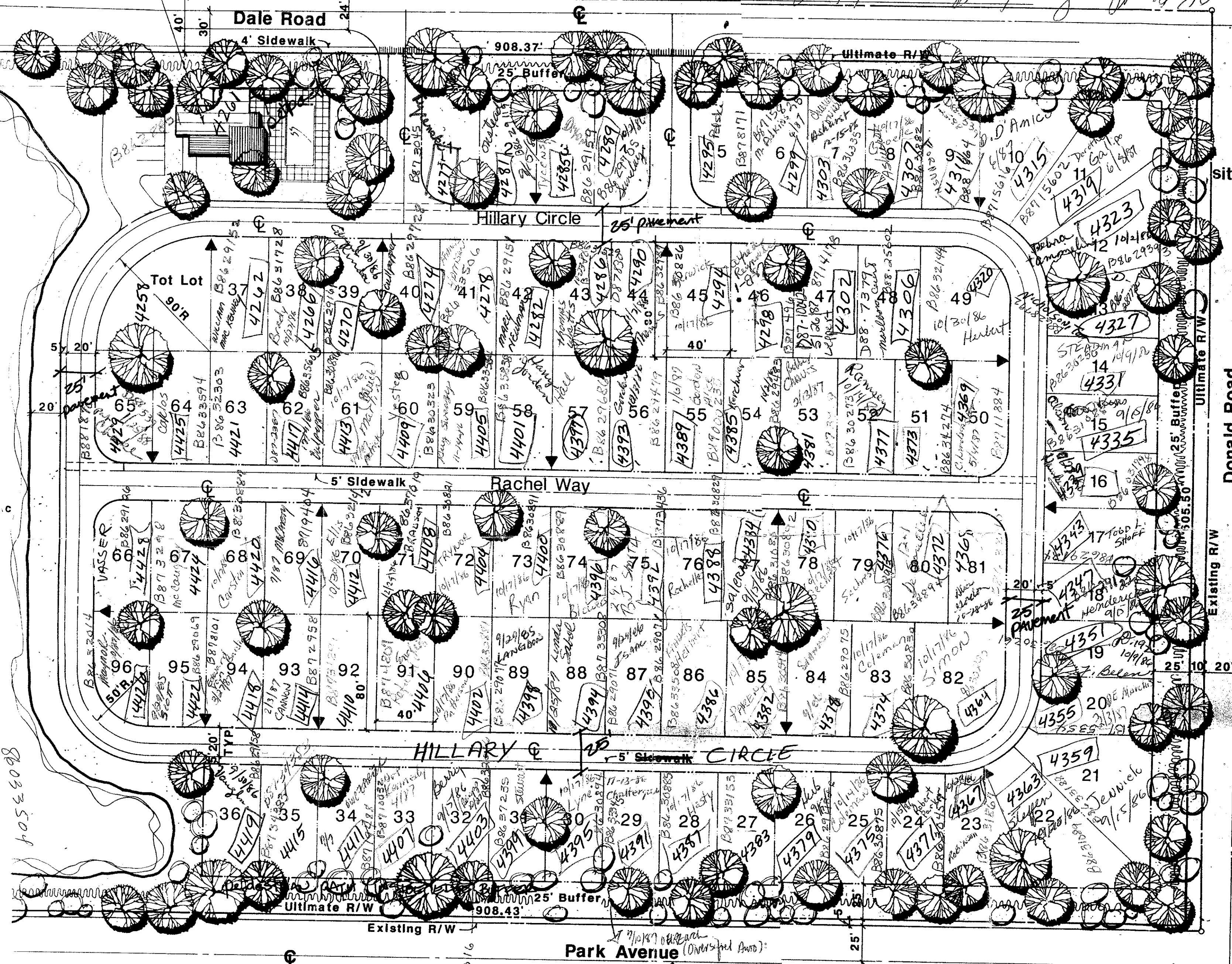


104-449

RM

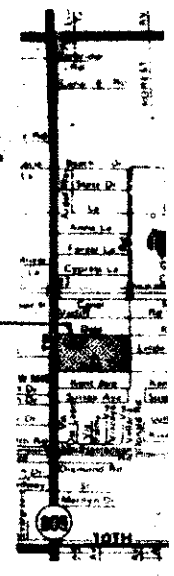
OK per Resolution for Submittal to Board
before Membership Meeting on 9/30/86

Recreation Area

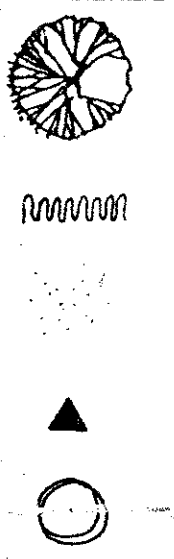


1053508

Loc



Leg



Site I

- Total S
- Total N
- Total (
- Total S
- Open S
- 75% of I
- 25% of F
- 100% of E
- (23
- 100% Ext
- Typ
- less
- pari

RM

RM

mh0026.igr
MARLBORO COURT MHP ADDRESSING

13-44-42
Rm
FSZ 19 / 402.00
004
Quad 13

ut

Conditions of Approval